

Pro 3600[®] Data Logger

Data recording made simple

Features

- Remotely monitor and record angles.
- Software has auto-install feature for quick and easy installation.
- Connect to any PC equipped with a serial port using either a footswitch available through our distributors Mitutoyo and SPI or an interface cable you can purchase directly from M-D (see cable information below).
- Single click export of logged data into new or existing Microsoft[®] Excel workbooks or into comma delimited files.
- Both Auto and Manual Detect features to recognize Pro 3600.
- Flexible data logging options
 - User set angle record interval from twice per second to every 99 hours
 - Manual logging using footswitch or on-screen button
 - Log data automatically upon change in measured angle
 - Set limits with alerts visible on PC screen and audible from PC speakers
 - Variable image size of real time angle for viewing from a distance
- User definable Standard or 24 Hour Time formats changeable on the fly.
- Built in Help screens.
- Printable installation and operation manual on the CD.

System Requirements

Windows XP[™] or 98[™]

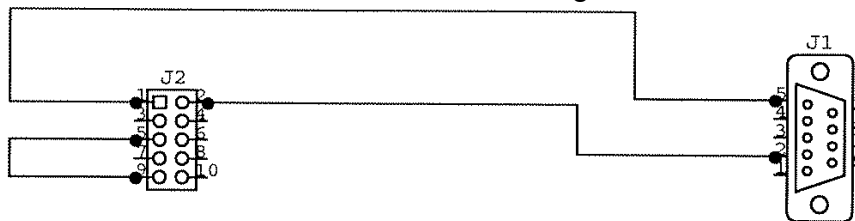
Microsoft[®] Excel[™]

Serial Port

Interface Cable

The interface cable is standard RS-232 wired as shown with a DB-9 Female connector for the computer's serial port and an Amp P/N 1658621-1 connector to interface with the Pro 3600.

Cables can be ordered from M-D Building Products in 6ft, 25ft and 50ft lengths.



Pin 1 is on
keyed side

Rear View of DB9

J2-1 Level Ground ==> J1-5 Computer Ground

J2-2 TX of Level ==> J1-2 RX of Computer

J2-5 RX of Level ==> J1-9 Batt+ of Level

Note: This cable will allow the 3600 to Tx data every 533 Ms.

Sample screen print of Pro 3600® Data Logger software home page



Microsoft® Excel™ spreadsheet created with Pro 3600® “single click” data export

Microsoft Excel - Pro 3600 Data Logger Sample Angles.xls

File Edit View Insert Format Tools Data Window Help

Type a question for help

10 B

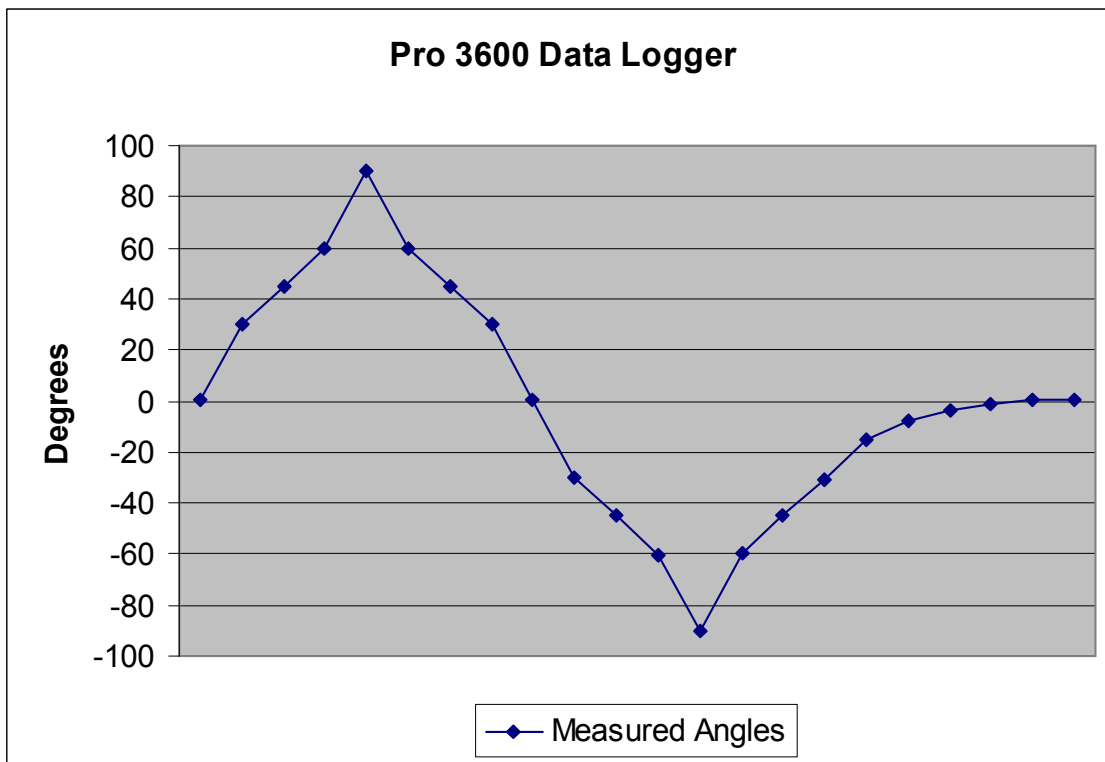
Reply with Changes... Egd Review...

	A	B	C	D	E	F	G	H	I	J	K	L	M	N	O
1	1	38:23.9	0												
2	2	39:35.6	30.28												
3	3	39:57.4	45.15												
4	4	40:24.2	60.07												
5	5	40:43.4	90.11												
6	6	41:14.5	59.86												
7	7	41:25.5	45.03												
8	8	41:49.0	30.26												
9	9	42:56.8	0.01												
10	10	43:37.3	-30.02												
11	11	43:57.5	-45.04												
12	12	44:16.1	-60.11												
13	13	44:49.4	-90.35												
14	14	45:04.8	-59.99												
15	15	45:21.2	-45.02												
16	16	45:38.1	-30.5												
17	17	46:06.5	-15.04												
18	18	46:24.0	-7.49												
19	19	46:39.4	-3.74												
20	20	46:59.6	-1.59												
21	21	48:22.2	0.04												
22	22	48:58.8	0.01												
23	23	49:25.0	0.01												
24															
25															
26															
27															

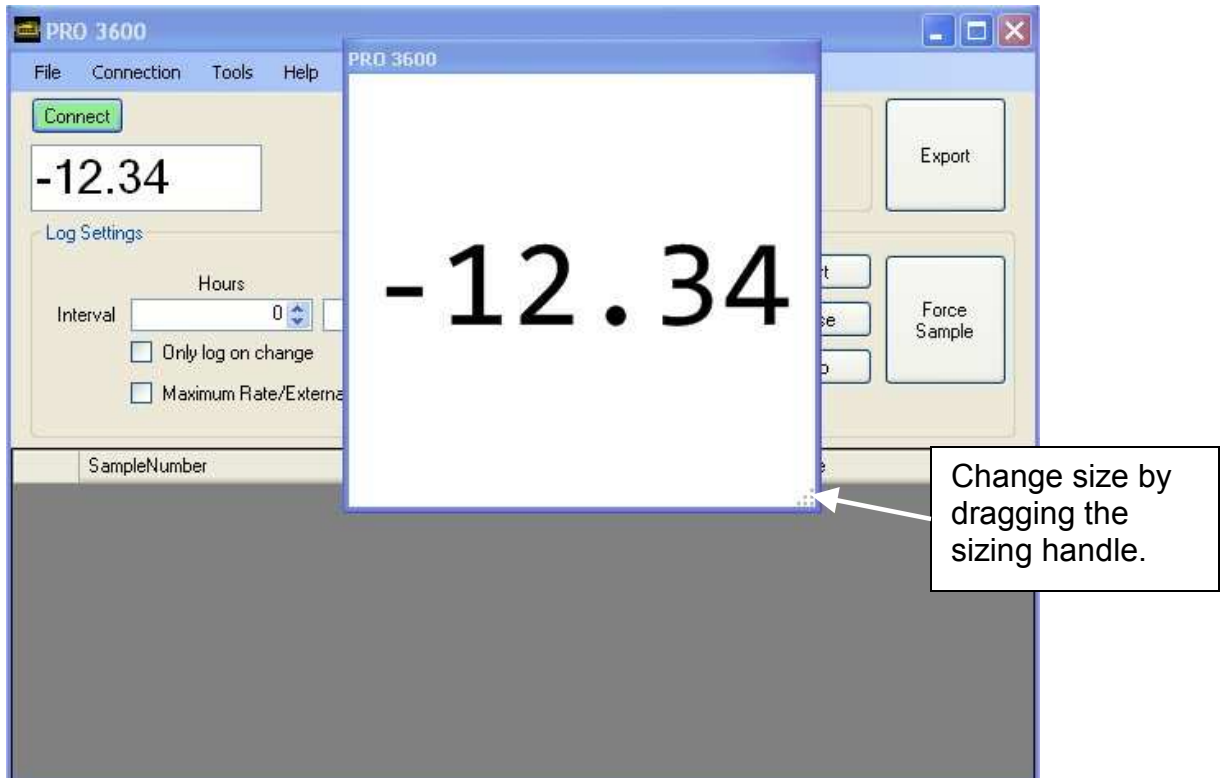
Sheet1

Ready Sum=261.1012292 NUM

Example of user created Microsoft Excel graph of the Pro 3600 data



**Example of enlarged real time measurement for viewing from a distance
Real time measurement window can be made to fill entire screen**



Example with Limits Setting Menu displayed



Example of visual alert when user set limit parameters are exceeded

